



DRAGON *alpha* III

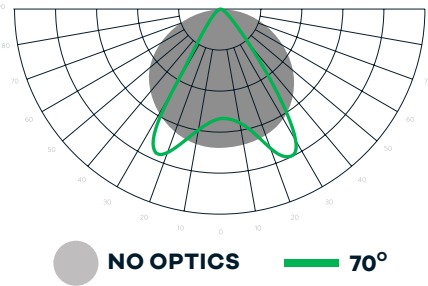


The **DRAGON alpha** just changed the rules of the game. Never before has a grower had so much control. No matter what crop, style or strain, the *alpha* can morph into exactly what you need and deliver every single time! A light is nothing more than a tool of the trade. The best tools are able to be mastered and manipulated by the best growers to enhance their craft.

Our patented optics allow plants to see equal intensity light from all angles (similar to sunlight), prevent hot/burned spots and result in a larger growing surface with more density below the canopy.



LIGHT DISTRIBUTION CURVE



LIGHT DELIVERY

Our patented optics allow plants to see equal light intensity and evenly distributed light from all angles. Meaning that the canopy is fully emersed in light from above and from the sides, pushing light deeper into the canopy. This even distribution of light prevents hot/burned spots, and portions of the canopy from growing at inconsistent rates. The result in a larger growing surface with even more plant density below the canopy surface.

SOLUTIONS TO FIT YOUR GROWING NEEDS



TENT

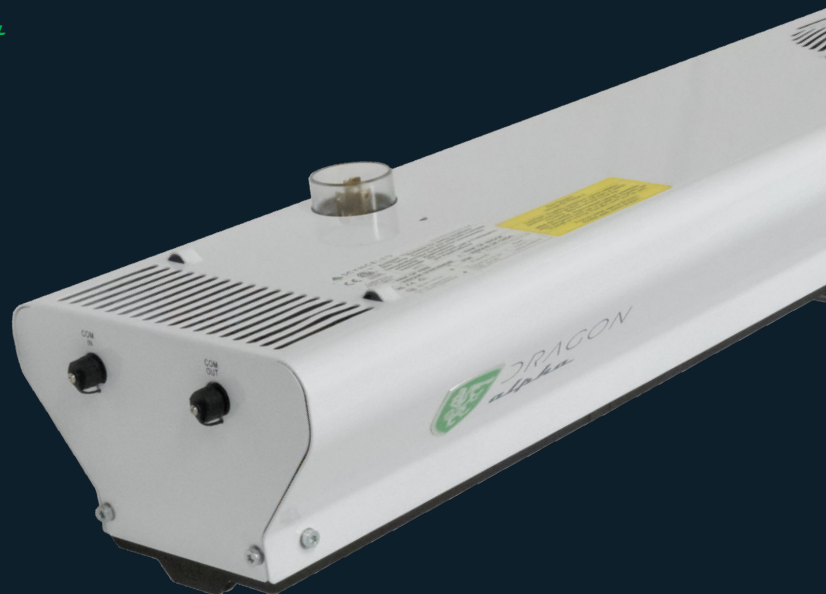
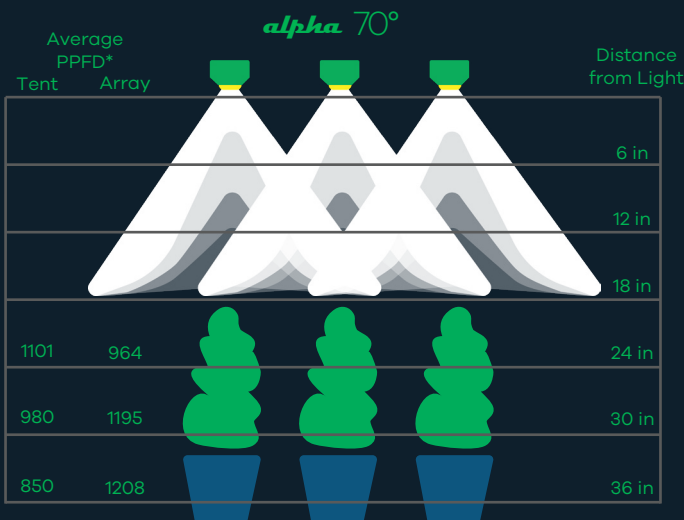


GREEN HOUSE

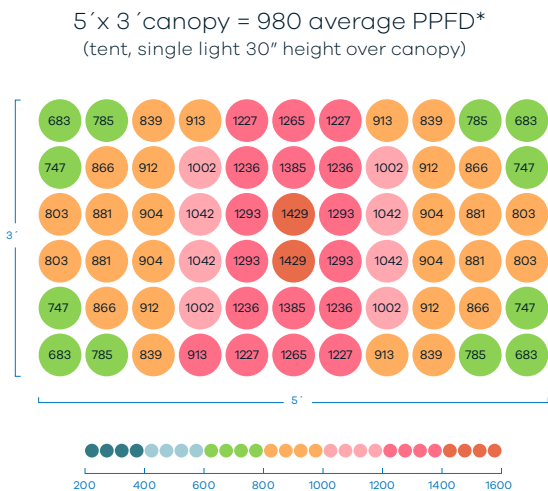
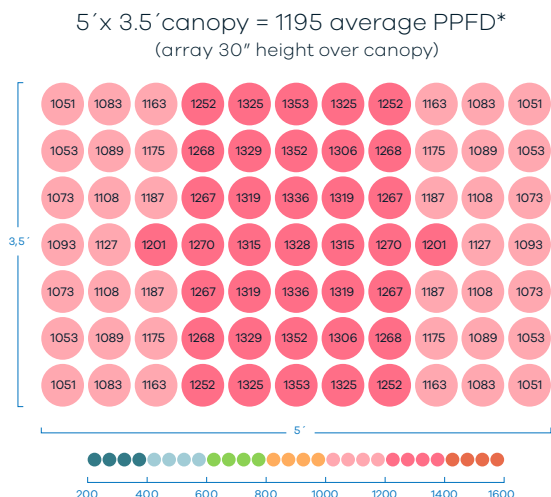


SINGLE LEVEL

AVERAGE PPF/D AT DISTANCE FROM THE *alpha*



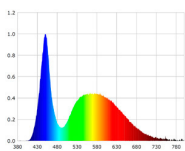
PAR MAP OF ALPHA II 70° OPTIC



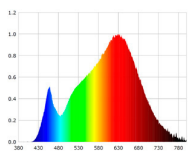
FULL POWER SPECTRUM TUNING

The *alpha* delivers full control over the spectrum without any loss of power. With $\pm 1,000$ PPFD* of any spectrum between 2700k and 6500k (warm to cool), you control what type of white light gets delivered to your plants. The red/far-red channel provides over 600 PPFD* of energy that can be evenly split between 660nm or 730nm or completely turned off. The *alpha* produces 1,200 PPFD* of on-the-fly customizable plant growing photonic power.

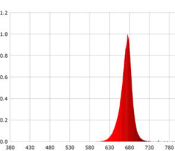
WHITE 6500K



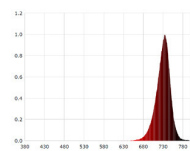
WHITE 2700K



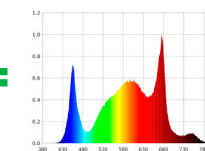
RED 660NM



RED 720NM



FULL SPECTRUM



DRAGON ALPHA II SPECS

POWER: 650w

WARRANTY: 5 years,

For details visit us @ (<https://scynceled.com/product-warranty/>)

INPUT VOLTAGE: 120 - 277V

AMPS: 120v-5.4 / 240v-2.7 / 277v-2.3

POWER FACTOR: >95

CABLE MGMT: Yes

DIMENSIONS: 44.5" x 8" x 5"

WEIGHT: 25 lbs.

WATERPROOF SEALING: IP66 Rating (entire light fixture)

THERMAL MANAGEMENT: Active - IP67 rated fan

MAX AMBIENT TEMP: 30° C

CERTIFICATIONS / TESTING: UL, CSA, CE, FCC, RoHS, DLC
UL1598, UL8750, UL8800, CSA C22.2 NO. 250.0-08, CSA C22.2 NO. 250.13

P/N: DRAGON ALPHA II

TUNABILITY: 4 color channels with *NEW* full power spectrum tuning

SPECTRUM: white (2700k and 6500k) and red (660 and 720nm)

SECONDARY OPTICS: Linear 70° (height over canopy is 24" to 72")

CONTROL: Wired & wireless control of spectrum, intensity, and scheduling

EFFICACY: 2.48 $\mu\text{mol}/\text{j}$

CHANNEL POWER: White = 650 watts Red = 160 watts

PPFD (@ 30in array): up to 1,195 $\mu\text{mol}/\text{m}^2/\text{s}$ over a 5'x3.5' (37 watts/sf)

PPFD (high DLI): up to 1,492 $\mu\text{mol}/\text{m}^2/\text{s}$ over a 4.5'x2.75' (52 watts/sf)

For higher PPFD (1200-2000) requirements contact the Scynce design team (sales@scynce.ag)

MAX COVERAGE AREA: Flower = 5'x3.5' Veg/Mother = 6'x5'

For supplemental Veg and Mother room design, contact the Scynce design team (sales@scynce.ag)

* PPFD values are measured using an Apogee sensor with lights arrayed at 5' x 3.5'. Note that PPFD values can change due to several conditions. Please contact Scynce for best results (sales@scynce.ag)



SCYNCELED